

Wallingford Way

Maidenhead • Berkshire • SL6 1AH

Guide Price: £350,000



coopers
est 1986

Wallingford Way

Maidenhead • Berkshire • SL6 1AH

A well presented two bedroom, two bathroom apartment situated in Alder House on Wallingford Way, part of a sought after development in the heart of Maidenhead. Conveniently located within easy reach of Maidenhead town centre, mainline railway station (Elizabeth Line), local shops, restaurants, and excellent transport links. The apartment comprises hallway with doors leading to the 23ft open plan kitchen/dining/living room, 20ft main bedroom with en-suite and fitted wardrobes, 12ft second bedroom with fitted wardrobes, family bathroom. Outside there is a private balcony that runs from the living area through to the main bedroom, along with allocated parking and ample visitor parking.

Two bedroom apartment

Second floor

No onward chain

Sought after development

23ft kitchen/dining/living room

20ft main bedroom w/ fitted wardrobes

12ft second bedroom w/ fitted wardrobes

Balcony

Allocated parking

Ample visitor parking

These particulars are intended as a guide and must not be relied upon as statements of fact. Your attention is drawn to the Important Notice on the last page.

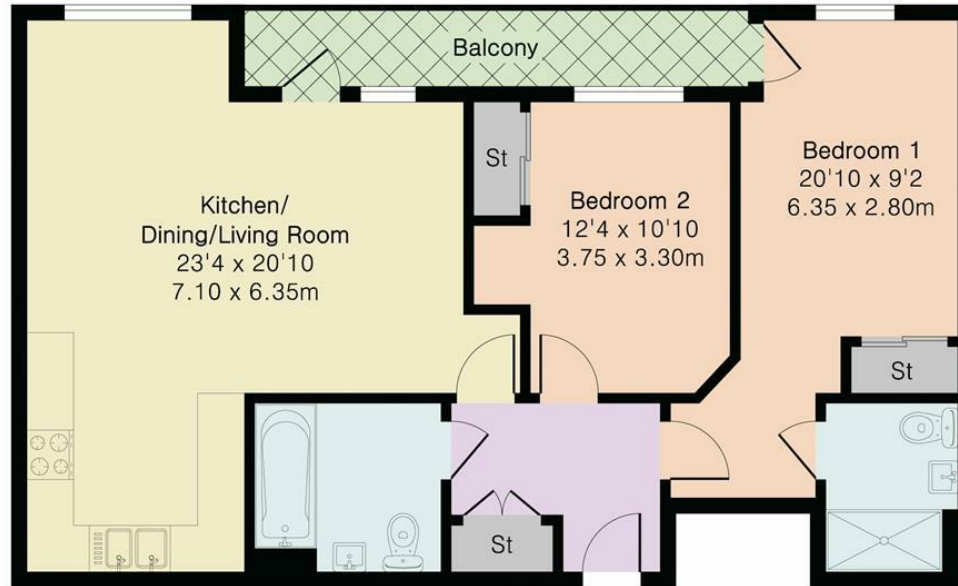




Alder House, Wallingford Way, Maidenhead, SL6

Main House Area = 816 sq ft / 75.8 sq m

For Identification only - Not to scale



Second Floor

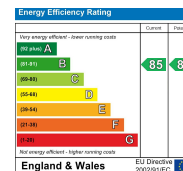


Floor plan produced in accordance with RICS Property Measurement 2nd Edition. Although Pink Plan Ltd ensures the highest level of accuracy, measurements of doors, windows and rooms are approximate and no responsibility is taken for error, omission or misstatement. These plans are for representation purposes only and no guarantee is given on the total square footage of the property within this plan. The figure icon is for initial guidance only and should not be relied on as a basis of valuation.



42 Queen Street, Maidenhead,
SL6 1HZ
maidenhead@coopersresidential.co.uk

CoopersResidential.co.uk



Important Notice: These particulars, whilst believed to be accurate are set out as a general outline only for guidance and do not constitute any part of an offer or contract. Intending purchasers should not rely on them as statements or representation of fact, but must satisfy themselves by inspection or otherwise has the authority to make or give any representation or warranty in respect of the property.